

UTVs

For a review of all the new and improved models in this year's guide, visit fwi.co.uk

KEY Traction: All models have selectable (or auto) 2/4-wheel drive unless stated 2wd. CVT - continuously variable transmission (variator + belts); DCT - dual clutch transmission; Hydro - hydrostatic drive; VHT - variable hydrostatic transmission; EM - electric motor(s); Std - standard equipment; No - feature not available; na - manufacturer or distributor has not supplied information.

Make + Model	Fuel/Engine size/ Power	Drive	Power steering	Weight	People capacity	Cargo box capacity	Cargo box dimensions (width x length x height)	Towing capacity braked trailer	UK road legal?	List price ex VAT
CAN-AM **BEST SELLERS										
Traxter BASE HD7 T	P / 650cc / 52hp	2f 1r CVT	No	676kg	3	454kg	138 x 96 x 30cm	1,136kg	Yes	£12,239
Traxter BASE HD9 T	P / 976cc / 65hp	2f 1r CVT	No	679kg	3	454kg	138 x 96 x 30cm	1,136kg	Yes	£14,159
Traxter DPS HD9**	P / 976cc / 65hp	2f 1r CVT	Std	698kg	3	454kg	138 x 96 x 30cm	1,136kg	No	£14,479
Traxter XU HD7 T	P / 650cc / 52hp	2f 1r CVT	Std	687kg	3	454kg	138 x 96 x 30cm	1,136kg	Yes	£14,159
Traxter XU HD9 T (green)	P / 976cc / 65hp	2f 1r CVT	Std	713kg	3	454kg	138 x 96 x 30cm	1,136kg	Yes	£16,639
Traxter XU HD9 T (grey)	P / 976cc / 65hp	2f 1r CVT	Std	713kg	3	454kg	138 x 96 x 30cm	1,136kg	Yes	£17,279
Traxter XU HD10 T ABS (black)	P / 976cc / 82hp	2f 1r CVT	Std	723kg	3	454kg	138 x 96 x 30cm	1,134kg	Yes	£18,719
Traxter Max DPS HD9	P / 976cc / 65hp	2f 1r CVT	Std	803kg	6	454kg	138 x 96 x 30cm	1,136kg	No	£16,639
Traxter Max DPS HD10 T ABS	P / 976cc / 82hp	2f 1r CVT	Std	845kg	6	454kg	138 x 96 x 30cm	1,134kg	Yes	£19,439
Traxter XT HD10	P / 976cc / 82hp	2f 1r CVT	Std	726kg	3	454kg	138 x 96 x 30cm	1,134kg	No	£17,759
Traxter X MR HD10	P / 976cc / 82hp	2f 1r CVT	Std	770kg	3	454kg	138 x 96 x 30cm	1,134kg	No	£19,519
Traxter PRO DPS HD10 (green)	P / 976cc / 82hp	2f 1r CVT	Std	831kg	3	454kg	138 x 180 x 30cm	1,134kg	Yes	£17,919
Traxter PRO HD10 XU (green)	P / 976cc / 82hp	2f 1r CVT	Std	891kg	3	544kg	138 x 180 x 25cm	1,134kg	Yes	£19,439
Traxter PRO HD10 XU T ABS (black)	P / 976cc / 82hp	2f 1r CVT	Std	891kg	3	544kg	138 x 180 x 25cm	1,134kg	Yes	£19,919
Traxter 6x6 DPS HD10	P / 976cc / 82hp	2f 1r CVT	Std	891kg	3	454kg	138 x 180 x 25cm	1,360kg	No	£19,359

Distributor: BRP UK. Note: All Traxter models have tipping load deck. Max models have two-row seating. XU Torque transmission provides 2wd and 4wd with open or locked rear differential plus auto locking front differential. DPS models have dynamic power steering; XU models have power steering with rider-adjustable and speed-related assistance; XU and XT models fitted with 2,014kg winch. Homologation: Traxter PRO DPS HD10 - International RNMM category; all other road legal models - T1b Tractor. Colour: XU HD9 T - Tundra Green or Stone Grey; MAX DPS HD10 T ABS - Stone Grey; XU HD10 T ABS - Timeless Black; XT HD10 - Hyper Silver; X MR HD10 - Titanium/Magma Red; Pro DPS HD10 and XU T ABS - Tundra Green or Timeless Black; all others Tundra Green. Top speed: 60kph.

CFMOTO **BEST SELLER										
UForce 600 EPS**	P / 580cc / 41hp	2f 1r CVT	Std	640kg	3	250kg	130 x 87 x 28cm	700kg	Yes	£10,249
UForce 600 EPS DFK Full Cab	P / 580cc / 41hp	2f 1r CVT	Std	640kg	3	250kg	130 x 87 x 28cm	700kg	Yes	£13,395
UForce 1000 EPS	P / 963cc / 80hp	2f 1r CVT	Std	690kg	3	500kg	142 x 87 x 29cm	900kg	Yes	£13,332
UForce 1000 EPS CFMoto Premium Cab	P / 963cc / 80hp	2f 1r CVT	Std	690kg	3	500kg	142 x 87 x 29cm	900kg	Yes	£16,232
UForce 1000 XL EPS	P / 963cc / 80hp	2f 1r CVT	Std	945kg	6	500kg	142 x 87 x 29cm	790kg	Yes	£14,082

Distributor: CFMoto UK/Quadzilla. Note: All models have manual tipping load deck. Standard equipment includes electric front winch, tow hitch and trailer electric socket. UForce 600 - three-person bench seat, UForce 1000 - three-person bench seat with storage under, UForce 1000 XL EPS - two three-person bench seats with storage under. All models - roof standard. UForce 1000 Half doors and roof standard. UForce 600 DFK Full Cab - Front tilt-out glass windshield with wiper/washer, Full polycarbonate doors with locks, blower style cabin heater, polycarbonate rear screen. UForce 1000 CFMoto Premium Cab - Full doors with power windows, front tilt-out glass windshield with wiper/washer, polycarbonate rear screen, roof liner, driver and passenger heated seats. Homologation: All models - T1b. All models available with free AtvTrac Tracker and first-year subscription. Colour: UForce 600 and 1000 - Twilight Blue, Desert Tan, True Timber Camo. UForce 1000XL - Twilight Blue, True Timber Camo. Top speed: 60kph.

CORVUS **BEST SELLER										
Terrain DX4 Base EPS	D / 993cc / 24hp	2f 1r CVT	Std	764kg	2	450kg	134 x 120 x 30cm	907kg	Yes	£17,799
Terrain DX4 Pro EPS	D / 993cc / 24hp	2f 1r CVT	Std	764kg	2	450kg	134 x 120 x 30cm	907kg	Yes	£18,999
Terrain DX4 Cab EPS**	D / 993cc / 24hp	2f 1r CVT	Std	764kg	2	450kg	134 x 120 x 30cm	907kg	Yes	£21,999
Terrain DX4 Cab Clima EPS	D / 993cc / 24hp	2f 1r CVT	Std	764kg	2	450kg	134 x 120 x 30cm	907kg	Yes	£23,999
Terrain EX4 Base EPS	E / 13kW	2f 1r CVT	Std	897kg	2	300kg	134 x 120 x 30cm	755kg	Yes	£26,299
Terrain EX4 Pro EPS	E / 13kW	2f 1r CVT	Std	897kg	2	300kg	134 x 120 x 30cm	755kg	Yes	£27,499
Terrain EX4 Cab EPS	E / 13kW	2f 1r CVT	Std	897kg	2	300kg	134 x 120 x 30cm	755kg	Yes	£29,499

Distributor: BOSS ORV. Note: All models have a manual or optional electric tipping load deck. DX4 Base, EX4 Base - open frame; DX4 Pro, EX4 Pro - adds front windscreen with wash/wipe, rear screen and under-seat storage. DX4 Cab - adds full-length doors and heater. DX4 Cab Clima - adds climate control air-conditioning. EX4 Base and Pro: as per DX4 Base/Pro. EX4 Cab - adds full-length doors and heated windscreen (no heater). Homologation: All models T1b. Colour: DX4 - Green or Orange; EX4 - Green, Orange or White. Top speed: DX4 - 60kph; EX4 - 40kph.

ELECTRIC WHEELS **BEST SELLER										
The Nipper	E / 5kW	3f 1r CVT	No	850kg	2	200kg	77 x 120 x 29cm	750kg	Yes	£13,495
The Nipper Pro**	E / 5kW	3f 1r CVT	Std	850kg	2	200kg	78 x 120 x 29cm	750kg	Yes	£16,995

Distributor: Electric Wheels. Note: Approximate range - The Nipper (lead acid battery) 50 miles, The Nipper Pro (lithium-ion) 75 miles. The Nipper has an electric tipping load deck. Standard equipment includes tow bar, 1,500kg front winch, cab roof and glass front windscreen with wash/wipe. Homologation: L7e. Colour: Green Blue, Black, White, Yellow, Orange, Sand. Top speed 45kph.

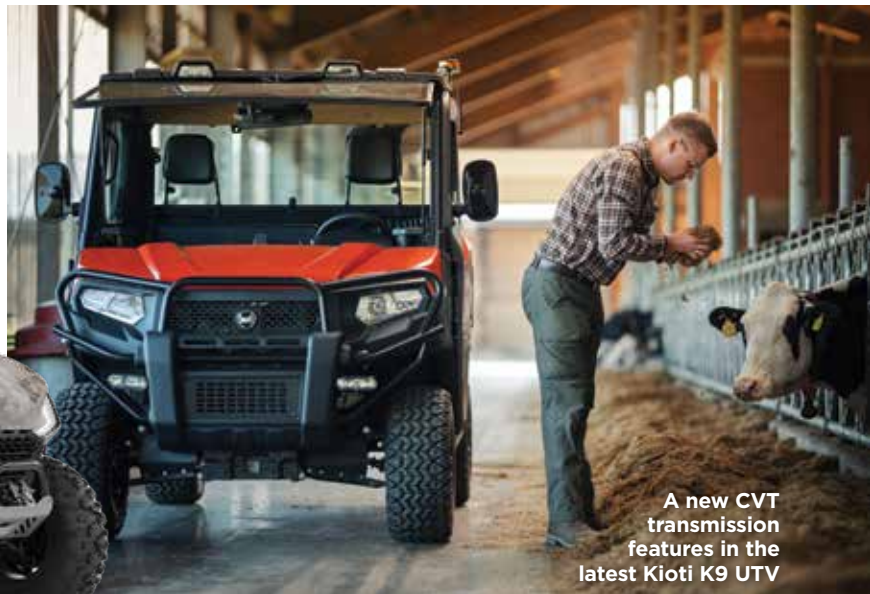
HISUN										
Sector 550	P / 546cc / 30hp	2f 1r CVT	Std	637kg	2	227kg	114 x 86 x 28cm	544kg	Yes	£9,995
Vector E1	E / 20kW	2f 1r CVT	No	934kg	2	227kg	104 x 76 x 28cm	500kg	Yes	£12,995
Sector 5	E / 5kW	1f 1r CVT	Std	704kg	3	227kg	97 x 76 x 33cm	225kg	Yes	£18,745
Sector 7	E / 7.5kW	1f 1r CVT	Std	778kg	3	227kg	143 x 106 x 33cm	350kg	Yes	£21,445

ULTIMATE GUIDE UTVS

Segway Fugleman range now includes this six-seater



PHOTOGRAPHY: SEGWAY, KIOTI



A new CVT transmission features in the latest Kioti K9 UTV

UTVS (continued)

Make + Model	Fuel/Engine size/Power	Drive	Power steering	Weight	People capacity	Cargo box capacity	Cargo box dimensions (width x length x height)	Towing capacity braked trailer	UK road legal?	List price ex VAT
Sector 15	E / 15kW	2f 1r CVT	Std	820kg	3	227kg	143 x 106 x 33cm	350kg	Yes	£25,495
Sector 15 4	E / 15kW	2f 1r CVT	Std	921kg	4	227kg	143 x 106 x 33cm	350kg	Yes	£27,495

Distributor: EP Barrus. Note: Batteries - Vector E1 dry cell, all Sector lithium-ion; Sector 5 12.7kWh, Sector 7 14.7kWh, Sector 15 and 15.4 16.5kWh. HiSun Sector and Vector models have a manual tipping load deck, power tip optional. Sector 15 4 is a two-row four seater. Standard equipment includes roof, windscreen, wing mirrors, indicators, 1,587kg winch and aluminium wheels. Homologation: Sector and Vector - T1a Tractor. Colour: Sector - Dark Green; Vector E1 - Green. Top speed 40kph.

HONDA

Pioneer 520	P / 518cc / na	5f 1r DCT	No	483kg	2	204kg	98 x 66 x 25cm	454kg	No	£11,515
Pioneer 520 Half Cab	P / 518cc / na	5f 1r DCT	No	503kg	2	204kg	98 x 66 x 25cm	454kg	No	£12,385
Pioneer 520 Full Cab	P / 518cc / na	5f 1r DCT	No	515kg	2	204kg	98 x 66 x 25cm	454kg	No	£13,480

Distributor: Honda Power Products. Note: Datatool Stealth tracker standard plus fitting charge and monthly subscription. All Pioneer models have a manual tipping load deck. Pioneer 520 has two individual seats. Half Cab - polycarbonate windscreen, fabric roof, rear panel. Full Cab - polycarbonate windscreen, hard roof, rear panel, fabric doors. Colour: Avenger Red. Top speed: na.

JOHN DEERE

****BEST SELLERS**

Gator HPX 815E	D / 854cc / 18.5hp	2f 1r CVT	No	693kg	2	454kg	132 x 114 x 30cm	590kg	Yes	£24,094
Gator XUV 855M S4	D / 854cc / 22hp	2f 1r CVT	Std	946kg	4	454kg	132 x 114 x 30cm	680kg	Yes	£31,016
Gator XUV 865M Open**	D / 854cc / 23hp	2f 1r CVT	Std	949kg	3	454kg	132 x 114 x 30cm	907kg	Yes	£30,740
Gator XUV 865M Full Cab**	D / 854cc / 23hp	2f 1r CVT	Std	1,011kg	3	454kg	132 x 114 x 30cm	907kg	Yes	£31,361
Gator XUV 865M Full Cab HVAC**	D / 854cc / 23hp	2f 1r CVT	Std	1,011kg	3	454kg	132 x 114 x 30cm	907kg	Yes	£35,344

Distributor: John Deere. Note: XUV 855M S4 has two-row seating. All two-seat models have manually or optional electro-hydraulic tipping load deck. Open models fitted with side nets or half doors; HPX 815E and XUV 855M open station models can be fitted with cab doors but this will affect road homologation regulations. Full Cab specification includes heater/blower plus air conditioning on HVAC models. Colour: Green/Yellow, Woodland Camouflage, Olive/Black on selected models. Homologation: T1b Tractor. Top speeds - HPX 815E 40kph, 855M S4 and 865M 50kph.

KAWASAKI

****BEST SELLER**

Mule SX 4x4 ROPS	P / 401cc / 13.5hp	2f 1r CVT	No	468kg	2	181kg	104 x 90 x 25cm	500kg	No	£8,278
Mule SX 4x4 Half Cabin	P / 401cc / 13.5hp	2f 1r CVT	No	468kg**	2	181kg	104 x 90 x 25cm	500kg	No	£10,157
Mule SX 4x4 Deluxe Cabin	P / 401cc / 13.5hp	2f 1r CVT	No	468kg**	2	181kg	104 x 90 x 25cm	500kg	No	£11,537
Mule Pro-MX ROPS	P / 695cc / 45hp	2f 1r CVT	Std	720kg	2	317kg	112 x 85 x 24cm	680kg	No	£11,778
Mule Pro-MX Half Cabin	P / 695cc / 45hp	2f 1r CVT	Std	720kg**	2	317kg	112 x 85 x 24cm	680kg	No	£13,657
Mule Pro-MX Deluxe Cabin	P / 695cc / 45hp	2f 1r CVT	Std	720kg**	2	317kg	112 x 85 x 24cm	680kg	No	£15,349
Mule Pro-DX ROPS	D / 993cc / 24hp	2f 1r CVT	Std	836kg	3	453kg	136 x 339 x 28cm	907kg	Yes	£15,778
Mule Pro-DX Half Cabin	D / 993cc / 24hp	2f 1r CVT	Std	836kg**	3	453kg	136 x 339 x 28cm	907kg	Yes	£17,657
Mule Pro-DX Deluxe Cabin**	D / 993cc / 24hp	2f 1r CVT	Std	836kg**	3	453kg	136 x 339 x 28cm	907kg	Yes	£19,081
Mule Pro-DXT ROPS	D / 993cc / 24hp	2f 1r CVT	Std	873kg	3 or 6	158kg/453kg	137 x 56/339 x 28cm*	907kg	Yes	£16,778
Mule Pro-DXT Half Cabin	D / 993cc / 24hp	2f 1r CVT	Std	873kg**	3 or 6	158kg/453kg	137 x 56/339 x 28cm*	907kg	Yes	£19,102
Mule Pro-DXT Deluxe Cabin	D / 993cc / 24hp	2f 1r CVT	Std	873kg**	3 or 6	158kg/453kg	137 x 56/339 x 28cm*	907kg	Yes	£22,242

Distributor: Kawasaki GB. Note: All models have a manual, gas strut assisted tipping load deck. All models include Cesar Datatag security identification. DXT models have single and fold-away second row seating. **Weights exclude optional cab elements. Mule SX 4wd: Half Cabin has no doors; Mule SX 4wd Deluxe hard cab has full doors, no heater. Mule Pro-MX: Half doors standard; Half Cabin has no full doors; Deluxe Hard Cabin has full doors and optional heater. Mule Pro-DX and DXT: Half doors standard; Deluxe Hard Cab has full doors and heater. DX/DTX - Bed extender £159, tool mounting system £19. Homologation: DX/DXT models have road lighting kit as standard for agricultural 'limited use'. Operator training for one included. Colour: Timberline Green. Top speeds - SX 40kph, Pro-MX na, Pro-DX + DTX 50kph.

ULTIMATE GUIDE UTVS

UTVS (continued)

Make + Model	Fuel/Engine size/ Power	Drive	Power steering	Weight	People capacity	Cargo box capacity	Cargo box dimensions (width x length x height)	Towing capacity braked trailer	UK road legal?	List price ex VAT
--------------	----------------------------	-------	-------------------	--------	--------------------	-----------------------	--	--------------------------------------	-------------------	----------------------

KIOTI

***REVISED MODEL**

K9 2410 U ROPS*	D / 1,007cc / 24hp	2f 1r CVT	Std	930kg	3	500kg	148 x 111 x 29cm	589kg	Yes	£20,200
K9 2410 U Field Cabin*	D / 1,007cc / 24hp	2f 1r CVT	Std	930kg	3	500kg	148 x 111 x 29cm	589kg	Yes	£26,100
K9 2410 CU*	D / 1,007cc / 24hp	2f 1r CVT	Std	930kg	3	500kg	148 x 111 x 29cm	589kg	Yes	£30,500

Distributor: Kioti UK. Note: K9 2410 U ROPS options include glass windscreen with wiper, sun canopy, plastic rear screen. K9 2410 U Field Cabin has full cab with glass doors and heater. K9 2410 CU has factory-fitted cab with heating and air conditioning, and speed-related electric power steering. All versions have a manual or electric tipping cargo deck. Homologation: EU road-going. Colour: Black with Red or Green bonnet and load deck flashes. Top speed: K9 2410 U and CU - 50kph.

KUBOTA

RTV 520 ROPS	P / 514cc / 17hp	2spd VHT	No	626kg	2	424kg	103 x 85 x 28cm	424kg	No	£14,054
RTV-X1110 ROPS	D / 1,123cc / 24hp	2spd VHT	Std	1,000kg	2	500kg	146 x 103 x 28cm	590kg	Yes	£21,527
RTV-X1110 Full Cab	D / 1,123cc / 24hp	2spd VHT	Std	1,090kg	2	500kg	146 x 103 x 28cm	590kg	Yes	£25,499
RTV-X1140 ROPS	D / 1,123cc / 24hp	2spd VHT	Std	1,075kg	2 or 4	300/500kg	146 x 66/130 x 28cm	1,000kg	No	£21,565

Distributor: Kubota UK. Note: RTV 520 has manual tipping load deck. RTV-X1110 and RTV-X1140 have hydraulic tipping load deck. RTV-X1140 has two-row seating convertible to single-row with extended cargo bed. Homologation: T1a tractor. Colour: Orange or Camo. Top speed: RTV 520 - 32kph; RTV-X1110 and RTV-X1140 - 40kph.

POLARIS

****BEST SELLER**

Ranger 570	P / 567cc / 44hp	2f 1r CVT	No	548kg	2	227kg	107 x 81 x 29cm	560kg	No	£11,999
Ranger 570 EPS EBS T1b	P / 567cc / 44hp	2f 1r CVT	Std	548kg	2	227kg	107 x 81 x 29cm	560kg	Yes	£12,899
Ranger 570 EPS EBS Hunter T1b	P / 567cc / 44hp	2f 1r CVT	Std	548kg	2	227kg	107 x 81 x 29cm	560kg	Yes	£13,699
Ranger 570 EPS EBS ADC Nordic Pro T1b	P / 567cc / 44hp	2f 1r CVT	Std	566kg	2	227kg	107 x 81 x 29cm	560kg	Yes	£14,599
Ranger EV Kinetic Premium T1b (14.9kWh li-ion)	E / 82kW	AC Motor	Std	785kg	3	567kg	138 x 93 x 32cm	1,134kg	Yes	£29,199
Ranger EV Kinetic Ultimate T1b (29.8kWh li-ion)	E / 82kW	AC Motor	Std	785kg	3	567kg	139 x 93 x 32cm	1,134kg	Yes	£37,599
Ranger 1000 EPS	P / 999cc / 82hp	2f 1r CVT	Std	678kg	3	454kg	138 x 93 x 32cm	1,134kg	No	£16,199
Ranger 1000 EPS T1b	P / 999cc / 82hp	2f 1r CVT	Std	682kg	3	454kg	139 x 93 x 32cm	1,134kg	Yes	£16,699
Ranger 1000 EPS Nordic Pro T1b	P / 999cc / 82hp	2f 1r CVT	Std	686kg	3	454kg	138 x 93 x 32cm	1,134kg	No	£18,299
Ranger Diesel HD EBS ADC**	D / 898cc / 24hp	2f 1r CVT	Std	766kg	3	453kg	138 x 93 x 32cm	1,134kg	Yes	£17,899
Ranger Diesel HD EBS ADC T1b	D / 898cc / 24hp	2f 1r CVT	Std	766kg	3	435kg	138 x 93 x 32cm	1,134kg	Yes	£18,399
Ranger Diesel Deluxe HD EBS ADC T1b**	D / 898cc / 24hp	2f 1r CVT	Std	766kg	3	435kg	138 x 93 x 32cm	1,134kg	Yes	£19,499
Ranger XP 1000 EPS	P / 999cc / 82hp	2f 1r CVT	Std	770kg	3	454kg	138 x 93 x 32cm	1,134kg	No	£18,399
Ranger XP 1000 EPS T1b	P / 999cc / 82hp	2f 1r CVT	Std	775kg	3	454kg	139 x 93 x 32cm	1,134kg	Yes	£18,799
Ranger XP 1000 EPS Hunter T1b	P / 999cc / 82hp	2f 1r CVT	Std	775kg	3	454kg	139 x 93 x 32cm	1,134kg	Yes	£19,299
Ranger XP 1000 EPS EBS ADC Nordic*	P / 999cc / 82hp	2f 1r CVT	Std	796kg	3	454kg	138 x 93 x 32cm	1,134kg	Yes	£19,899
Ranger XP 1000 EPS EBS ADC Nordic T1b	P / 999cc / 82hp	2f 1r CVT	Std	796kg	3	454kg	138 x 93 x 32cm	1,134kg	Yes	£19,899
Ranger Crew 6 Seat 1000-6 EPS	P / 999cc / 82hp	2f 1r CVT	Std	744kg	3 or 6	454kg	138 x 93 x 32cm	1,134kg	No	£16,999
Ranger Crew 6 Seat 1000-6 EPS T1b	P / 999cc / 82hp	2f 1r CVT	Std	744kg	3 or 6	454kg	138 x 93 x 32cm	1,134kg	No	£19,699
Ranger Crew 6 Seat XP 1000-6	D / 999cc / 82hp	2f 1r CVT	Std	858kg	3 or 6	454kg	138 x 93 x 32cm	1,134kg	Yes	£18,799
Ranger Crew 6 Seat XP 1000-6 T1b	D / 999cc / 82hp	2f 1r CVT	Std	858kg	3 or 6	454kg	138 x 93 x 32cm	1,134kg	Yes	£21,799
General 1000 EPS Deluxe ABS EBS T1b	P / 999cc / 99hp	2f 1r CVT	Std	700kg	2	272kg	109 x 70 x 30cm	680kg	Yes	£24,699

Distributor: Polaris Britain. Note: All Ranger models have a manual or optional electric tipping rear load deck. Ranger Crew models have two-row seating. Nordic and Deluxe editions have factory-fitted heater. Front axle drive automatically engages when loss of traction is detected; all models have lockable rear diff. Partial and full cab kits available. Homologation: T1a or T1b / PLG road legal optional. Colour: Sage Green - Ranger 570 and Ranger Diesel; Icy White (hood) - Ranger EV; Camo - Hunter editions; Pearl Black - Nordic editions; Azure Crystal - XP 1000 EPS, Crew XP 1000 EPS; Steely Blue: General 1000 EPS Deluxe ABS. Top speed: na.

QUADZILLA

Electric UTV 2wd	E / 9.7kW	1f 1r*	No	426kg	2	400kg	147 x 102 x 40cm	680kg	Yes	£7,499
------------------	-----------	--------	----	-------	---	-------	------------------	-------	-----	--------

Distributor: Quadzilla. Note: *Electric drive has Power and Economy settings; approximate range 62 miles. Standard equipment includes electric front winch, tow hitch and trailer electrics. Homologation: T1a agricultural machine. Colour: Blue on Black, Red on Black. Top speed: 40kph.

SEGWAY

***NEW MODEL **BEST SELLER**

Fugleman U10E**	P / 1,000cc / 105hp	1f 1r CVT	Std	780kg	3	450kg	130 x 92 x 29cm	700kg	na	£11,249
Fugleman U10TX Deluxe	P / 1,000cc / 105hp	1f 1r CVT	Std	780kg	3	450kg	130 x 92 x 29cm	700kg	na	£12,499
Fugleman U10 Crew Premium*	P / 1,000cc / 105hp	1f 1r CVT	Std	930kg	6	450kg	120 x 86.5 x 29cm	1,134kg	na	£14,165

ULTIMATE GUIDE UTVS

UTVS (continued)

Make + Model	Fuel/Engine size/ Power	Drive	Power steering	Weight	People capacity	Cargo box capacity	Cargo box dimensions (width x length x height)	Towing capacity braked trailer	UK road legal?	List price ex VAT
--------------	----------------------------	-------	----------------	--------	-----------------	--------------------	--	--------------------------------	----------------	-------------------

Distributor: Segway Powersports UK. Note: Manual tipping cargo box. Electric front winch, three-setting electric power steering; U10E and U10TX Deluxe - three individual seats, U10 Crew Premium six individual seats. U10TX adds alloy wheels, half doors in place of nets, and 10.4in touchscreen to access drive settings, vehicle data and Fugleman 'team-up' feature. App available for remote data and monitoring. Homologation: na. Colours: U10E - Grey/Black, Prairie/Camo; U10TX Deluxe - Black/Black; U10 Crew Premium - Grey/Black, Prairie/Camo.

SHIRE

*NEW MODELS

Brutus 6x4 E-UTV	E / 2 x 5kW	1f 1r E	Yes	1,070kg	2	1,000kg	154 x 154 x 32cm	na	Option	£19,970
Centaur E-UTV	E / 14kW	1f 1r E	No	830kg	2	400kg	138 x 90 x 35cm	na	Option	£23,450
Kandi Cowboy e10K*	E / 10kW	1f 1r E	Yes	650kg	2	1,000kg	160 x 100 x 35cm	700kg	Yes	£24,650
Avatar*	E / 24kW	1f 1r E	Yes	650kg	2	1,000kg	160 x 100 x 35cm	850kg	Yes	£29,999

Distributor: Propel Energy. Note: Batteries - Brutus 12V lead-acid, Centaur 72V lithium-ion, Cowboy 11.5kWh lithium-ion range 60 miles, Avatar na. Brutus 6x4 and Centaur standard equipment includes front and rear windscreens, roof, front winch and electric-tipping cargo deck. Cowboy standard equipment includes windscreen, roof and half doors, electric power steering, 10in touchscreen and reversing camera, 1,588kg winch and electric tipping cargo box. Avatar standard equipment na. Colours: Brutus 6x4 - Black/Yellow; Centaur - Black/Red, Green, Camo; Cowboy - na; Avatar na. Top speed: Brutus 6x4 50kph, Centaur 45kph, Cowboy 64kph, Avatar na.

YAMAHA

UMX AC	E / 5kW	EM	No	640kg	2	363kg	116 x 104 x 30cm	544kg	No	£13,400
Viking EPS	P / 686cc / na	2f 1r CVT	Std	613kg	3	272kg	139 x 93 x 31cm	680kg	No	£16,350
Wolverine RMax 2 1000 SE	P / 999cc / na	2f 1r CVT	Std	930kg	2	272kg	115 x 75 x 23cm	907kg	No	£24,750
Wolverine RMax 2 1000 LE	P / 999cc / na	2f 1r CVT	Std	930kg	2	272kg	115 x 75 x 23cm	907kg	No	£poa
Wolverine RMax 4 1000	P / 999cc / na	2f 1r CVT	Std	930kg	4	272kg	No	907kg	No	£25,850
Wolverine RMax 4 1000 LE	P / 999cc / na	2f 1r CVT	Std	934kg	4	272kg	No	907kg	No	£poa

Distributor: Yamaha Motor UK. Note: Viking and Wolverine standard equipment includes a tracker. Viking EPS has three individual seats, manual tipping rear load deck and two mode electric power steering. Wolverine RMax 2 has two individual seats. Wolverine RMax 4 has four individual seats, with folding/sliding rear seats to create load space behind. Wolverine RMax SE and LE models have Sports, Trail and Crawl drive modes, front towing eye and 2,040kg front winch. Wolverine RMax options include soft and hard cab packs or individual door kits, polycarbonate windscreen, soft rear window, glass rear window, cab heater. Homologation: na. Colour: UMX - Carbon, Leaf Green, Glacier, Bluestone; Viking - Olive Green, Yamaha Blue; Wolverine RMax 2 1000 SE - Desert Tan; Wolverine RMax 4 1000 - Cyan/Yamaha Black, Wolverine RMax 2/4 1000 LE - Dusty Blue. Top speed: UMX 31kph; Viking and Wolverine na.